



**The Atlanta Stereographic Association was formed in 1990 to promote all forms of stereoscopic photography by its members and to the general public.**

Meetings are held the 2nd Friday of each month, and start at **7:30 p.m.**, at the **Congregational Church**, 2676 Clairmont Road, Atlanta Georgia.

**President:**

Ralph L. Reiley  
1851 Cameo Court  
Tucker GA, 30084  
[reileys@att.net](mailto:reileys@att.net)  
770-493-1375

**Vice President:**

Open

**Treasurer/Membership:**

Marilyn Morton

**Projectionist:**

Larry Moor

**Competition Director:**

Ken Kistner

**Webmaster:**

Steve & Suzanne Hughes

**Newsletter Editor:**

Ralph L. Reiley  
[reileys@att.net](mailto:reileys@att.net)  
770-493-1375

**Membership Information:**

Information can be obtained by calling  
Ralph Reiley @ 770-493-1375,  
[reileys@att.net](mailto:reileys@att.net)

**Membership Dues for 2011:**

\$30.00 for an individual,  
\$30.00 for couples, family  
\$30.00 for non-local  
Free for Off World (Proof Required)  
Dues to be paid to Marilyn Morton at  
meetings, or mail her a check at 1139  
St. Louis Place, Atlanta, Georgia, 30306

**Website:**

Our website is **Georgia3d.com**; it  
contains details about the ASA and  
general 3-D information

## Refocus That Please – By Ralph Reiley

There were 13 people at the November meeting. **Lee Pratt** presented the **2009-2010 PSA Sequence Show**, and it was a great show as usual. **Steve and Suzanne** had two entries in this year's **Sequence Show**, and one of their sequences placed 2<sup>nd</sup>. **Steve** was also awarded a medal for the **ISCC Slide of the Year, Green Iggy**. We also had a slide competition. Ken invited a guest, **Mr. Steven Panayiotto**, who acted as judge. As usual, it was hard to pick the winners, and the results of the competition were:

1 <sup>st</sup>	Suzanne Hughes	Blooming above Quito
2 <sup>nd</sup>	Lee Pratt	Burney Creek
3 <sup>rd</sup>	Lee Pratt	West Side of the Wave
H.M.	Suzanne Hughes	A Mocking Bird Builds a Nest
H.M.	Steve Hughes	Carlsbad Cavern

## December Program – Dec. 10, 2010:

The December meeting will be the annual Christmas Party at the Fish Camp, see page 4 for a map. Everyone is encouraged to bring a warm coat and a cooler full of beer/whiskey/moonshine, or any other beverage. Bring some treats to share, and we will have a lavish spread of food as usual. Steve and Suzanne will provide their usual program of the best digital stereo slides and video for us to enjoy.

We will not meet at the Fortune Cookie this month, due to the lavish spread of food and drink at the party.

The meeting is the 2nd Friday of this month, Dec. 10, at 7:30 p.m. at the **Congregational Church**, located at 2676 Clairmont Road, just south of I-85, see our website at **Georgia3D.org**, for a map to the church. If you have any questions call Ralph Reiley @ 770-493-1375, [reileys@att.net](mailto:reileys@att.net).

## Tentative Schedule for 2010-2011 ASA Club Season\*:

\*Note: This is a tentative schedule and subject to change.

Dec. 10, 2010: Christmas Party & Digital extravaganza  
Jan. 14, 2011: Chuck Rogers Cape Canaveral & NASA retrospective  
Feb. 14, 2011: PSA Traveling Show & Slide competition  
March 11, 2011: Digital Projection Workshop & Zeppelin digital slide show  
April 8, 2011: View Master Extravaganza & Stereo Card Competition  
May 13, 2011: Year End Awards & TBA

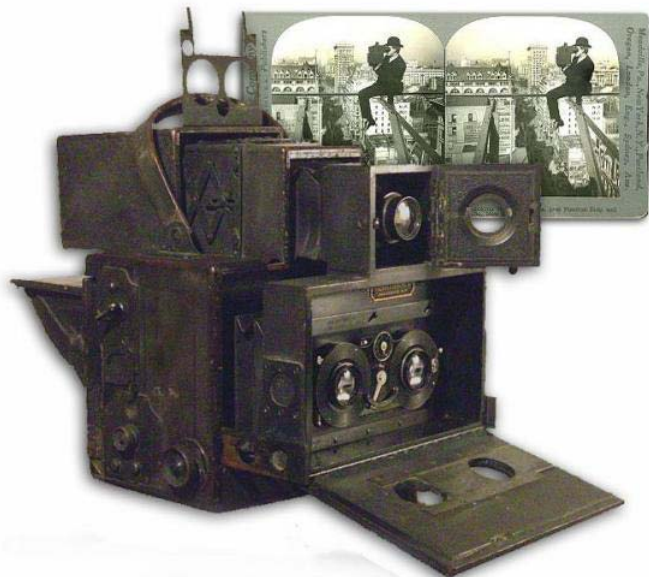


**ASA**

ATLANTA STEREOGRAPHIC ASSOCIATION

## October Mystery Photos:

Due to the editor falling down some stairs last month, page 2 of the November Freeview was missing. Here are the answers to October's mystery photos.



## Mystery photo #1

The **Triple Lens Stereo Graphic** made by Folmer & Schwing. It is one of the rarest stereo cameras in the world.

This Camera was made from 1902 to 1904. In 1904 Kodak bought them out, and manufacturing of this camera seems to have been discontinued in 1904 shortly after the purchase of Folmer & Schwing by Kodak. It is the camera being used in the famous photo of the photographer out on the steel framing over looking the Flat Iron Bldg. The camera used two standard Kodak 5x8 photo plate holders, and the deluxe model cost \$305.00 in 1902. There was also a basic model without lenses for \$150.00 and a model with standard lenses for \$258.00. It was a quite expensive camera in 1902. The deluxe model had matched Bausch and Lomb Zeiss Tessar lenses. The camera was made of kiln dried mahogany and black Morocco leather. The steel fittings were given a gun metal finish.

**See you all at the Christmas Party at the Fish Camp, See page 4 for map and directions.**

## Mystery Photo #2

Mr. Charles Dickens



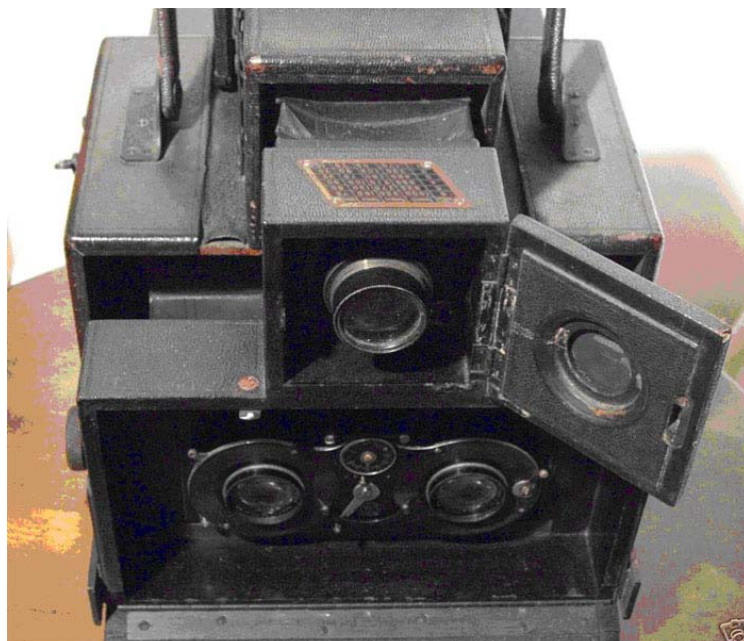
## Mystery Photo #3

Marilyn Morton identified the woman in the 2<sup>nd</sup> row with the funny hat as her grandmother, Lina Luella Lutin, who made hats for Bella Abzug..



## Mystery Photo #4

Nobody identified the lens on Ms. Anna Glyph's camera, and I don't have a clue either.





# Technical Page by Charles A. Piper

## Installment #17

Reprinted by permission of the Stereo Club of Southern California

THE TECHNICAL PAGE

CHARLES PIPER, EDITOR

INSTALLMENT #17

### SHOOT THE AQUARIUM TANKS FOR TIDE POOL PICTURES OF SALON QUALITY

Several years ago I was shooting the tanks at the Boston Aquarium. Just after my strobes fired, I heard a voice behind me "lots of luck!" I turned to face a well dressed young man with a Canon f/9 camera around his neck. He explained that "it is not possible to photograph these tanks; many people have tried." The purpose of today's article is to unlock the secrets of aquarium tank pictures. Once you understand the principles, tanks are easier to shoot than tide pools, and a lot more likely to make a Salon.

WHERE YOU LOSE THE LIGHT Briefly there are three things you must understand, all related to exposure, and you will need to work out the mechanics of avoiding reflections, holding your camera steady, etc. I shall quote the principles, and you may use my tips on mechanics or invent your own. The first principle is that there is a great light loss in sea water. In most tanks it is nearly one stop per foot of water. If your camera and strobe are 2 feet from the subject, the light has to travel 4 feet. If you used the simple guide number your picture would be about 4 stops underexposed! In addition, there is loss where the light passes in and out of the tank. This can amount to 1/2 to 1 stop. Finally, the refraction of the water causes the range to read low. When the apparent range is 3 feet, the range is 4 feet.

EQUIPMENT AND MECHANICS For stereo pictures your best bet is a KinDar or Hyponar, preferably modified to eliminate vignetting; for flattie pictures any SLR will do. A standard stereo camera doesn't work too well because it doesn't focus close enough and the lens spacing is too wide for close subjects. To light the picture I use two 700 BCPS strobes (G. N. 30 on ASA 25 film). The camera is fastened by its tripod socket to the center of a double flash bracket with a strobe at each end. To support the whole assembly I use a Kalimar vacuum pod with a ball joint (you want the model that is 4" high). To keep stray light out of your lens, you may use a collapsible rubber lens hood touching the tank glass. I focus my modified Hyponar with fixed auxiliary lenses of -1, -2, and +1/2 diopter, and can tell from the auxiliary lenses the distance, and hence the aperture to use. If you are using a varifocal attachment on your KinDar, you may wish to calibrate it so you can use it to estimate distance. You may use the table below, or estimate the round trip distance the light travels, and allow 1 stop per foot over the guide number, or you may divide the guide number by the value shown in the last column. And one other precaution, your camera must look straight into the tank. No angle shots; one picture will be larger than the other. Carry a towel to wipe the glass of the tank.

SUGGESTED APERTURES FOR KINDAR AQUARIUM PICTURES WITH TWO 700 BCPS STROBES AND FILM OF ASA 25, 64, 200. ALSO GUIDE NUMBER DIVIDER.

AUX. LENS PWR.	APP. DIST in.	TRUE DIST in.	ASA 25 f/	ASA 64 f/	ASA 200 f/	DIV. G.N. by	
+0.5	8.1	10.8	18-22	28-36		2.4	IMPORTANT NOTE: Unless modified, Hyponars begin vignetting at about f/11, and KinDars at about f/16
0.0	9.0	12.0	15-19	24-31		2.5	
-0.5	10.2	13.6	12-16	20-26		2.7	
-1.0	11.7	15.6	10-13	16-21	28-36	3.0	
-1.5	13.7	18.3	7.5-9.6	12-15	22-27	3.3	
-2.0	16.6	22.1		8.5-11	15-19	3.8	
-2.5	21.0	28.0			9-12	4.9	
-3.0	28.6	38.2			4-5.6	7.8	

FLASH BRACKETS If you cannot find a flash bracket suitable for tank pictures, and I could not, make one from a piece of aluminum. It should be about 13" x 1 1/2" x 3/32" thick, with a ball joint and an accessory shoe at each end. Raise one of the shoes on a standoff 3" high to give you a high and a low light, or put one shoe below the bracket, for the low light.

## 2010 ASA Christmas Party at the Fish Camp

**Who:** You

**What:** Bring some treats to share, byob, and a warm coat

**Where:** Alpha Psi Bldg. Corporation,  
2881 Creek Drive  
Duluth, Ga 30096

**When:** Dec. 10, 2010 starting at 7:30 till.

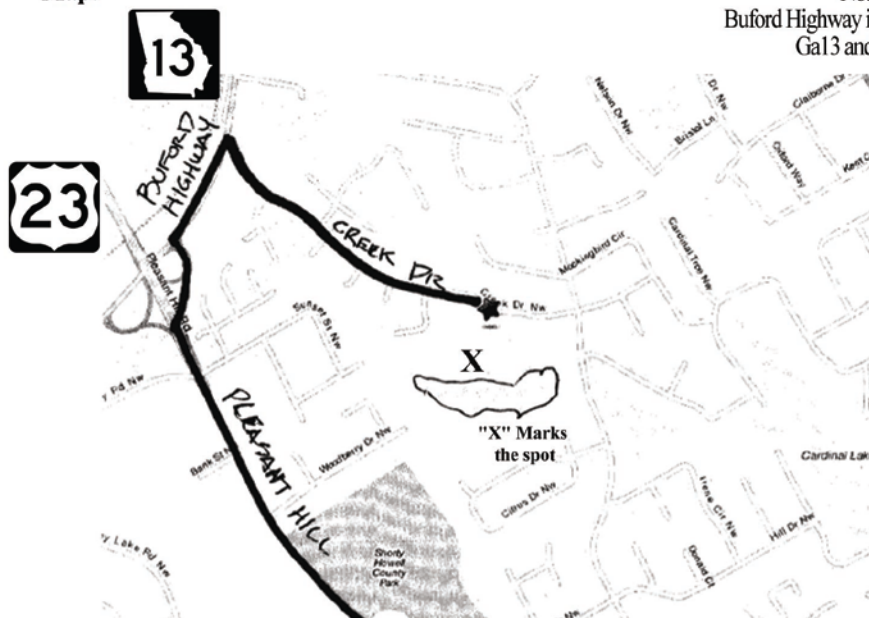
**Why:** To see the amazing digital video and slide show by Steve & Suzanne.

**Find map at:**

<http://www.mapquest.com/maps?city=Duluth&state=GA&address=2881+Creek+Drive&zipcode=30096>

**Directions:** From 85, go North to Pleasant Hill Road, Turn left, go approximately 2 miles to Buford Highway. Go North (right) 1/4" mile, turn right on Creek Drive (look for Howards Hardware) go 1 mile until you see the stop sign. The property will be on the right. Go through the gates, and head down towards the lake. We will be in the building on the right as you enter the property.

**Map:**



Also Note:

Unlike other years, a large  
sign will be placed at the  
entrance of the Fish Camp

Bring a warm coat, your favorite adult beverage, and some treats to share with the others. Also bring a folding chair or two, and did I mention, bring some treats to share for our pot-luck style Christmas Party Extravaganza Feast.